



Energy Outlook 2023: A Webinar on Interruptible Load Program and Power Supply & Demand Management

24 March 2023 | 2:00 – 4:00 PM

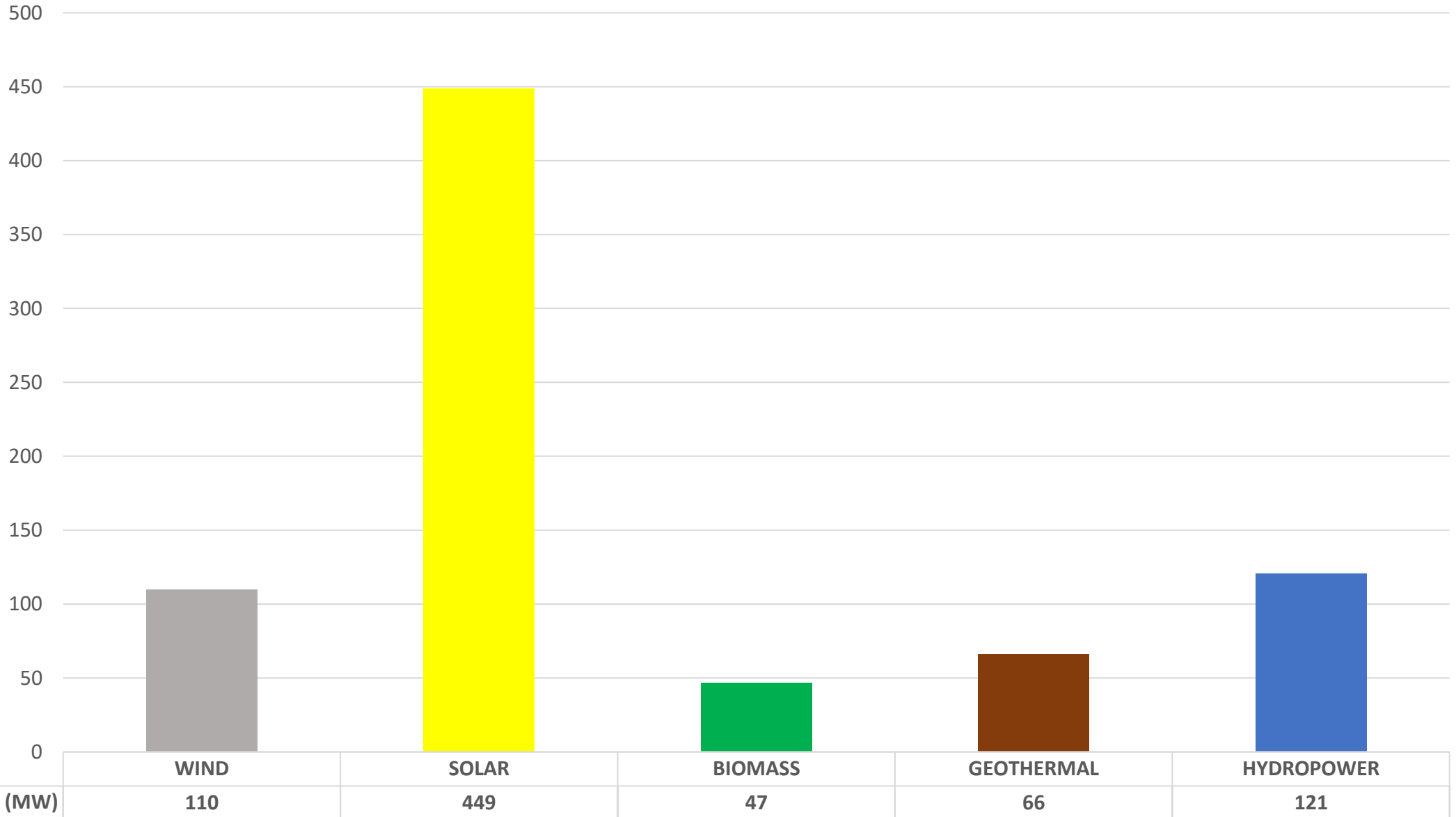
ROWENA CRISTINA L. GUEVARA, Ph.D.
Undersecretary



DEPARTMENT OF ENERGY
Empowering the Filipinos



2023 Committed RE Projects





Green Energy Auction Program - 2

- GEA Program provides an additional market for RE through competitive electronic bidding of RE capacities.
- Annual auction or as necessary.
- GEA-2 is set to be conducted in **June 2023**, with the proposed installation targets (in MW) from 2024-2026:

| 2024 | 2025 | 2026 |
|-------|-------|-------|
| 3,590 | 3,630 | 4,390 |

Timeline of Activities

| GEA-2 Milestone of Activities | |
|---|----------|
| 1. Notice of Auction | D |
| 2. Release of Terms of Reference (TOR) and Auction Round Procedures (ARP) | D1 + 20 |
| 3. ERC's Issuance of GEAR Price | D21 + 10 |
| 4. Start of Registration of Qualified Suppliers | D31 + 7 |
| 5. Last day of Registration of Qualified Suppliers | D38 + 10 |
| 6. Evaluation of Qualified Suppliers | D48 + 5 |
| 7. Posting of Qualified Bidders | D53 + 3 |
| 8. Pre-Bid Conference for Qualified Bidders | D56 + 3 |
| 9. Conduct of Auction | D59 + 20 |
| 10. Issuance of the Notice of Award | D79 + 9 |

Note: D = Day



Green Energy Auction Program - 3

Geothermal and Impounding Hydro

- DOE will develop a specific auction policy and guidelines for geothermal and impounding hydro
- DOE will issue a policy on the settlement of payment through WESM for non-FIT projects (i.e., geothermal and impounding hydro)
- GEA–3 is targeted to be conducted in the 4th quarter of 2023.

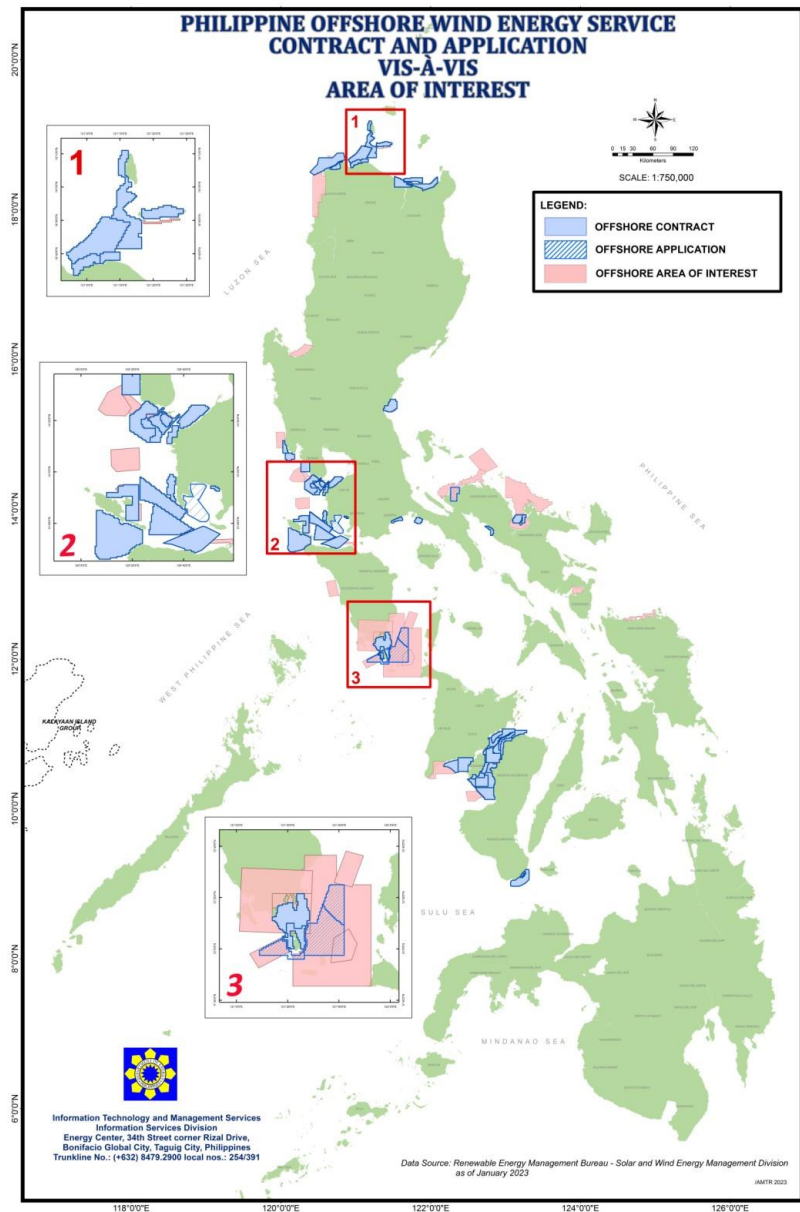




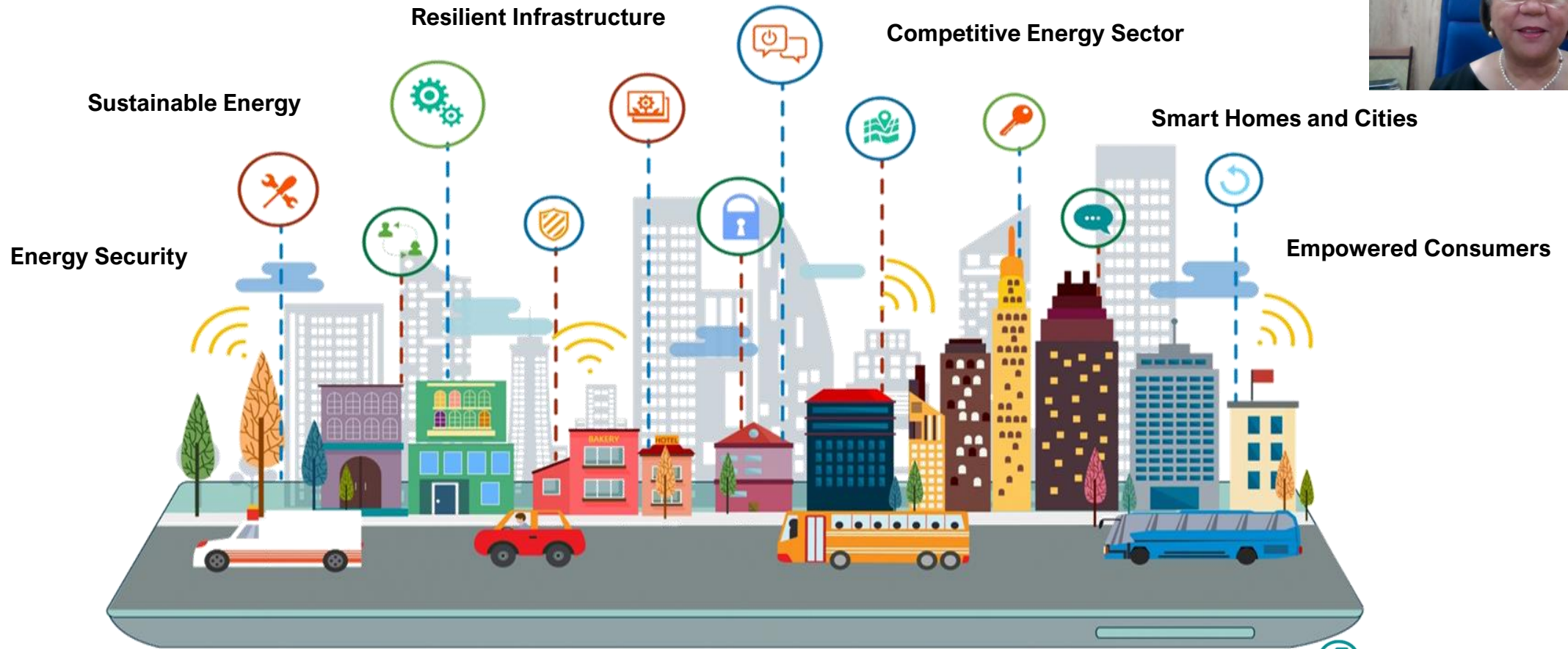
Offshore Wind

DOE has awarded **57 Offshore Wind (OSW) Energy Service Contracts** with a **potential capacity of 42.22 GW**

- A **DOE Circular** defining the procedures and requirements for awarding OSW Service Contracts will be issued
- An **Executive Order** clarifying and streamlining the permitting and consenting requirements for OSW is being reviewed for finalization by the Office of the President



FUTURE ENERGY SCENARIO (PEP 2020 – 2040)



Sustainable Energy

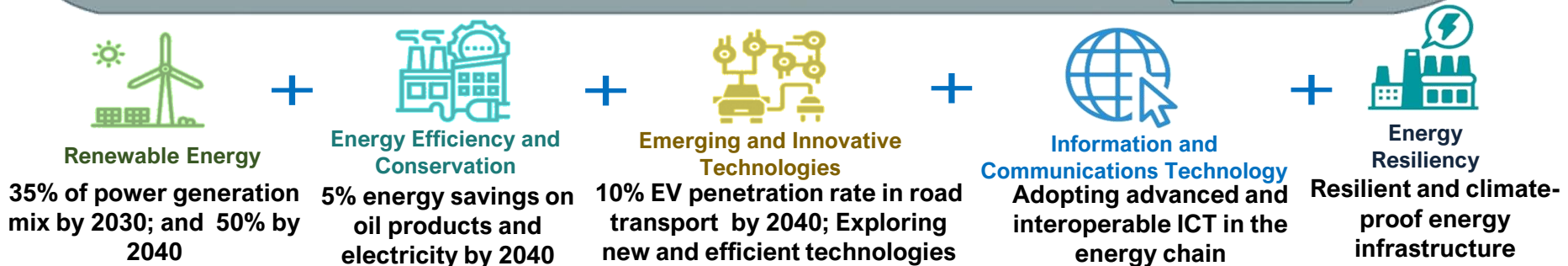
Resilient Infrastructure

Competitive Energy Sector

Smart Homes and Cities

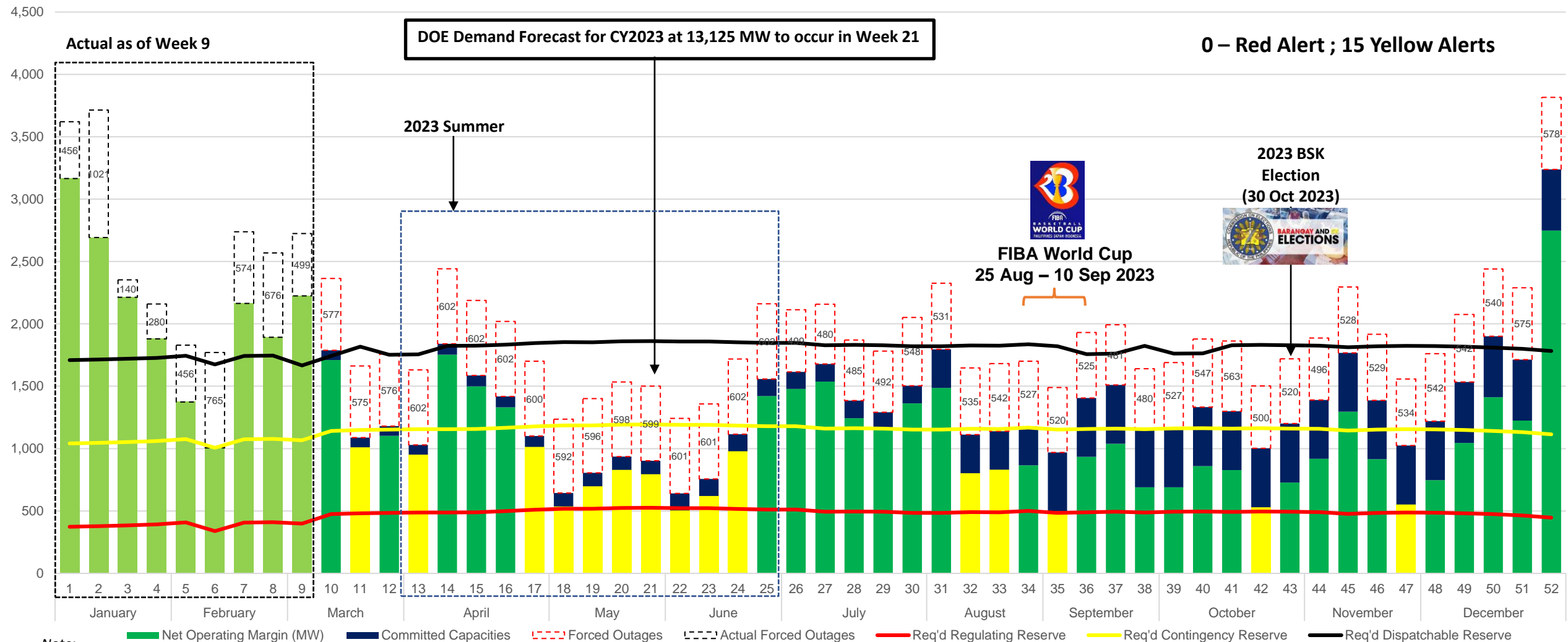
Energy Security

Empowered Consumers



Luzon Grid Power Demand Outlook as of Week 9 2023

Basecase Assumptions: Approved GOMP; with Forced Outages and Committed Projects, without Ilijan



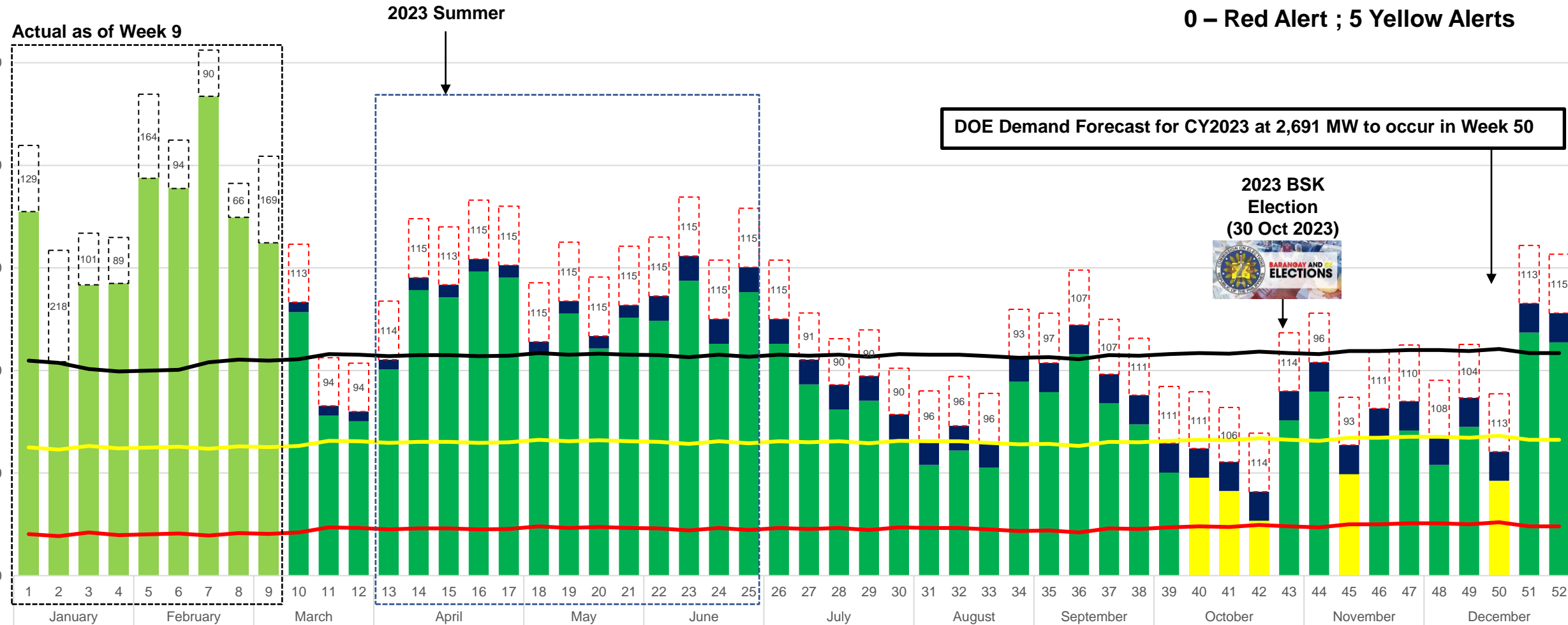
Note: Net Operating Margin (MW) Committed Capacities Forced Outages Actual Forced Outages Req'd Regulating Reserve Req'd Contingency Reserve Req'd Dispatchable Reserve

1. Projected Operating Margin is based in DOE-approved GOMP 2023-2025 rev 0
2. Included Committed Power Projects Capacities as of January 2023 update
3. Forced outage rate assumptions are based on average weekly historical data from 2018-2021
4. Capacity additions for solar and wind are at 16% and 27.5% capacity factors respectively, from REMB

Visayas Grid (Evening) Power Demand Outlook as of Week 9 2023

Afternoon Basecase Assumptions: Approved GOMP; with Forced Outages and Committed Projects, without HVDC

1,200



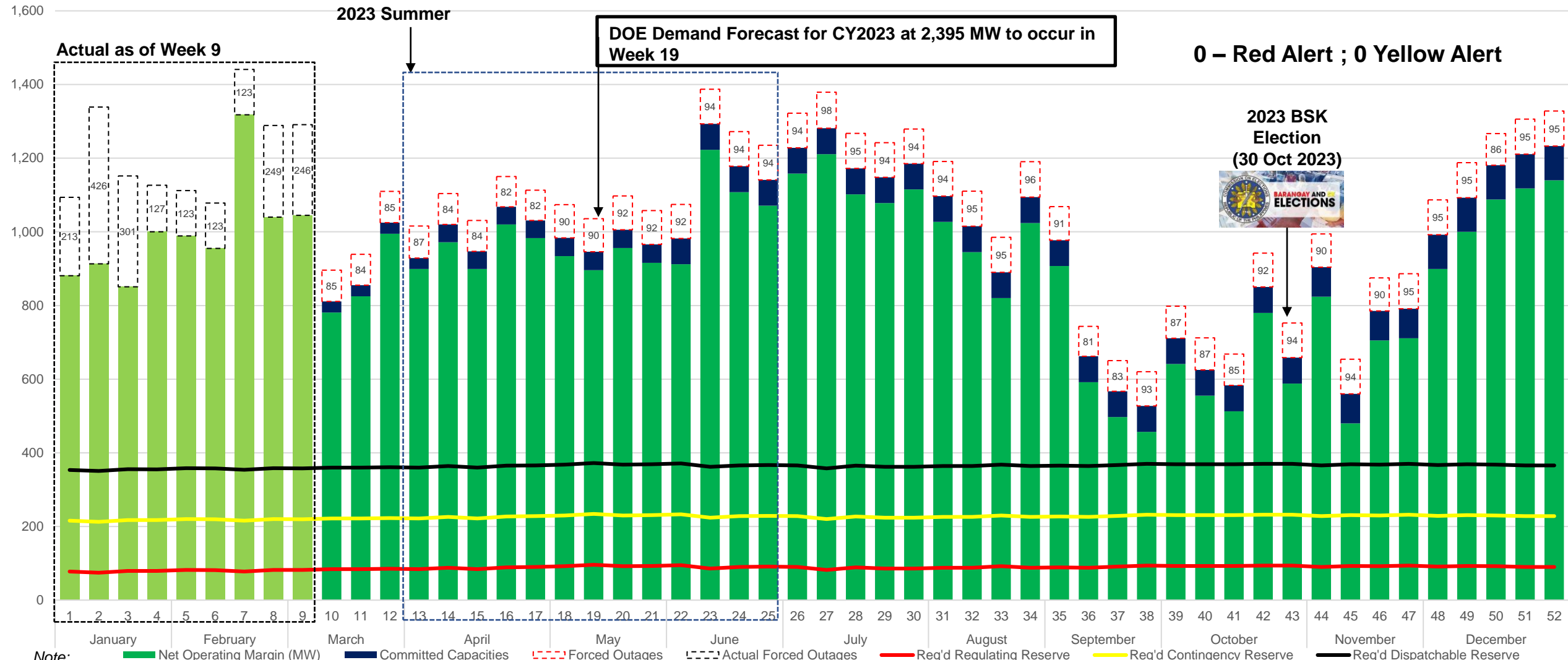
Note:

- Net Operating Margin (MW)
- Committed Capacities
- Forced Outages
- Actual Forced Outages
- Req'd Regulating Reserve
- Req'd Contingency Reserve
- Req'd Dispatchable Reserve

1. Projected Operating Margin is based in DOE-approved GOMP 2023-2025 rev 0
2. Included Committed Power Projects Capacities as of January 2023 update
3. Forced outage rate assumptions are based on average weekly historical data from 2018-2021
4. Capacity additions for solar and wind are at 16% and 27.5% capacity factors respectively, from REMB

Mindanao Grid Power Demand Outlook as of Week 9 2023

Basecase Assumptions: Approved GOMP; with Forced Outages and Committed Projects



Note: Net Operating Margin (MW) Committed Capacities Forced Outages Actual Forced Outages Req'd Regulating Reserve Req'd Contingency Reserve Req'd Dispatchable Reserve

1. Projected Operating Margin is based in DOE-approved GOMP 2023-2025 rev 0
2. Included Committed Power Projects Capacities as of January 2023 update
3. Forced outage rate assumptions are based on average weekly historical data from 2018-2021
4. Capacity additions for solar and wind are at 16% and 27.5% capacity factors respectively, from REMB

Supply and Demand-Side Contingency Plans for the Summer 2023

- **Ensure Availability of Supply**
 - Availability of generating units to meet the demand and required reserves
 - Suspend preventive maintenance and testing of generating units
 - No Forced / Unplanned Outage during Summer
- **Increased number of active ILP participants**
 - Activate existing ILP of other Distribution Utilities
 - NGCP to firm up the Day-Ahead Declaration of Red Alert Notice
 - Directly-Connected Customers (DCCs) to join ILP

Update on Interruptible Load Program (ILP)

Universe of ILP Enrollees in MERALCO as of January 2023

- To date, the total capacity available for de-loading in MERALCO's area is **560.59 MW** from **117 companies** representing **260 participating accounts**.
 - From Captive, 34.39 MW from 44 services
 - From Contestable, 526.20 MW from 216 services
- 153 services with a total potential de-loading capacity of 342.02 MW have yet to sign the ILP agreement.

| Customer Tag | Supplier | Total MW | Signed MW | Signed - Count of Services | Potential MW | Potential – Count of Services |
|--------------------------|--------------------------|---------------|---------------|-------------------------------|---------------|----------------------------------|
| Captive - Private | MERALCO | 47.49 | 32.69 | 43 | 14.8 | 3 |
| Captive - Government | MERALCO | 1.70 | 1.70 | 1 | - | - |
| Captive Total | | 49.19 | 34.39 | 44 | 14.80 | 3 |
| Contestable | MPOWER | 278.66 | 174.87 | 95 | 103.80 | 57 |
| | Aboitiz Energy Solutions | 289.31 | 281.56 | 89 | 7.75 | 3 |
| | Advent | 37.03 | | | 37.03 | 15 |
| | BGI | 19.02 | | | 19.02 | 10 |
| | CESIRES | 8.14 | 0.5 | 1 | 7.64 | 5 |
| | DIRPOWRES | 73.72 | 62.48 | 28 | 11.24 | 5 |
| | FDCRES | 10.00 | | | 10.00 | 1 |
| | GCGI | 17.80 | | | 17.80 | 11 |
| | Kratos | 3.00 | | | 3.00 | 2 |
| | MPPCL | 16.08 | 2.00 | 1 | 14.08 | 9 |
| | SCPC | 38.40 | 4.8 | 2 | 33.60 | 7 |
| | SCRCRES | 1.00 | | | 1.00 | 1 |
| | SEPHRES | 22.68 | | | 22.68 | 5 |
| | TAORES | 10.48 | | | 10.48 | 7 |
| | TPECRES | 9.70 | | | 9.70 | 4 |
| | VESMIREs | 16.11 | | | 16.11 | 7 |
| | SNAPMIREs | 2.30 | | | 2.30 | 1 |
| Contestable Total | | 853.43 | 526.20 | 216 | 327.22 | 150 |
| Grand Total | | 902.62 | 560.59 | 260 | 342.02 | 153 |

Source: MERALCO



Energy Outlook 2023: A Webinar on Interruptible Load Program and Power Supply & Demand Management

24 March 2023 | 2:00 – 4:00 PM

ROWENA CRISTINA L. GUEVARA, Ph.D.
Undersecretary



DEPARTMENT OF ENERGY
Empowering the Filipinos